

SAN ANTONIO WATER SYSTEM

CHILLED WATER COMMUNICATION AND CONTROLS REPLACEMENT
SOLICITATION NO. CO-00090, SAWS JOB NO. 14-7502

Chilled Water Meters Replacement



Scope of Work for this Portion:

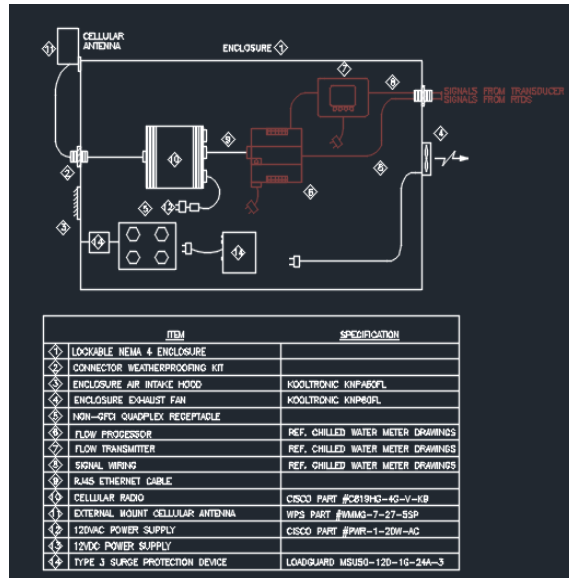
- Replace Chilled Water RTDs
- Replace Flow Sensors
- Replace Flow Processors



Chilled Water Meters Replacement (Higher Difficulty Scenario)



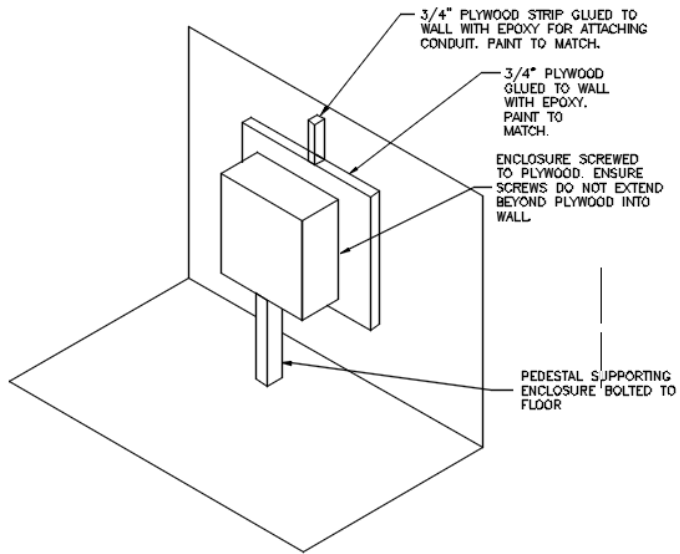
Chilled Water Radios



Scope of Work for this Portion:

- Install new NEMA 4 enclosures in 20 customer buildings in downtown SA, and the two SAWS chiller plants
- Install components inside enclosure including flow processor, chilled water radio, and others
- Install pressure sensors with I/O modules in 4 sites
- Remove existing enclosure

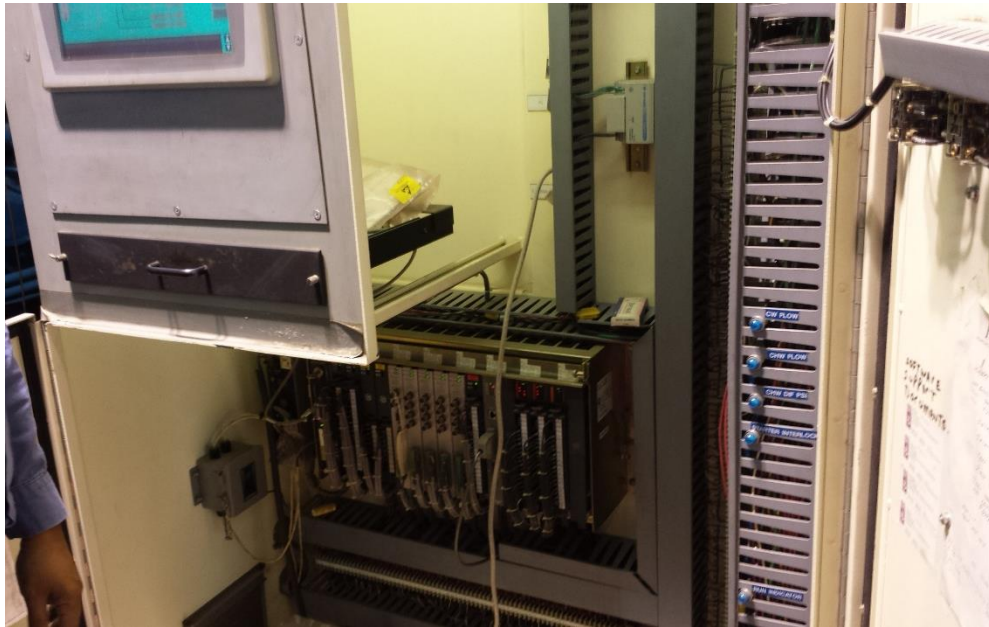
Chilled Water Radios



For buildings with Asbestos / lead:

- Baer Engineering sampled walls where scope is going to take place
- No demo will take place on identified walls
- For new work we will glue a 3/4" plywood on the wall and mount the enclosure on it.
- This method has been approved by Baer Engineering.

PLC Upgrade



Scope of Work Includes:

- Replace PLC for each Chiller 1-5
- Replace PLC for Aux Equipment PLC
- Add new server and workstations